



# Pressure Ranges / Overloads, Special Versions, Accessories and Ordering Information

Pressure Ranges / Overloads		
Overpressure (r)	Absolute pressure (a)	Overload limits**
0- 1 bar	-1/0 bar	0- 1 bar abs
0- 1.6 bar	-1/+0.6 bar	0-1.6 bar abs
0- 2.5 bar	-1/+1.5 bar	0-2.5 bar abs
0- 4 bar	-1/+3 bar	0- 4 bar abs
0- 6 bar	-1/+5 bar	0- 6 bar abs
0- 10 bar	-1/+9 bar	0- 10 bar abs
0- 16 bar	-1/+15 bar	0- 16 bar abs
0- 25 bar		0- 25 bar abs
0- 40 bar		—
0- 60 bar*		—
0- 100 bar*		—
0- 160 bar*		—
0- 250 bar*		—
0- 400 bar*		—

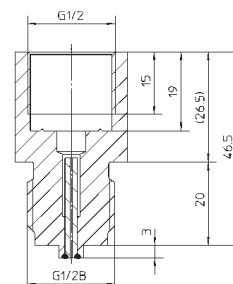
\* accuracy  $\pm 0.3\%$  of full scale value

\*\* for intermediate pressure ranges upon request

## Accessory

Deflagration volume protection "**Adapt-FS**" ("flame penetration protection") Variant 1 according to data sheet I-11001, made of 1.4571 (316 stainless steel) / cannula 1.4301 (304 stainless steel), process connection G 1/2 B (1/2" BSP) according to EN 837-1, with CE-Type Examination Certificate PTB 99 ATEX 4023 X according to standard 94/9/EG, marking of this protection system:

**Ex II G IIC**



## Ordering Information

Basic model:	diaphragm placed inside diaphragm flush welded	<b>PTMEx</b> <b>PTMExFB</b>
Case configuration: standard case:		<b>no additional code letters;</b>
field housing:		<b>FG</b>
Medium-temperature:	standard version (up to 80 °C)	<b>no additional code letters;</b>
with temperature decoupler (up to 140 °C, see left side):		<b>TE</b>
Type of protection:		<b>ib</b>
Marking with temperature class:		<b>T4, T5 or T6</b>
Pressure type:	overpressure absolute pressure:	<b>(a)</b>
Pressure range:	see table above, e.g.	<b>0-4 bar</b>
Output signal:	standard: optional	<b>4 ... 20 mA,</b> <b>0 ... 20 mA</b>
Specifics:	e.g. process connection 1/2" NPT, M 22x1.5 and others, <b>see left</b> ; special position of installation, other special versions upon request	

## Examples:

### PTMEx ib T6 (r) -1/+3 bar, 4...20 mA

(that means: PTMEx pressure transmitter with Ex-protection, standard version for max. medium temperature. +80 °C, type of protection ib, temperature class T6, for relative pressure -1/+3 bar, output signal 4 ... 20 mA, pressure connection G 1/2 B)

### PTMExFG TE ib T6 (a) 0-6 bar, 0...20 mA

(that means: PTMExFG pressure transmitter with field housing with Ex-protection, with temperature decoupler for max. medium temperature +140 °C, type of protection ib, temperature class T6, for absolute pressure 0-6 bar, output signal 0 ... 20 mA (3-wire technique), pressure connection G 1/2 B)

### PTMExFB ib T5 (r) 0-400 mbar, 4...20 mA, G1B

(that means: PTMExFB pressure transmitter with Ex-protection standard version for max. medium temperature +80 °C, type of protection ib, marking with temperature class T5, for relative pressure 0-400 mbar, output signal 4 ... 20 mA, (2-wire technique), pressure connection G 1 B)

## Options

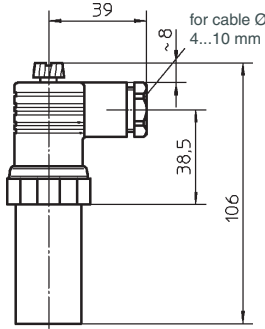
- Version with **temperature decoupler** for temperatures of -10 °C up to +140 °C, order code letters **TE**
- Cable connection** IP 67, cable ventilation;  
**circular plug connector** with screw plug M 12, IP 65
- Field housing, order code: ...FG** (e.g. PTMExFG, PTMExFBFG), massive version, screwable cover ring with O-ring sealing for externally accessible adjustable potentiometer, screwable cap for connection chamber with O-ring thread protector, connecting terminals 4 mm<sup>2</sup>, screwed cable gland M 16 x 1.5 for cable  $\varnothing$  4.5-10 mm.
- Other process connections:**
  - **Model PTMEx:** 1/2" NPT according to DIN EN 837-1 upon request
- Connection to Zone 0**  
using our screw adapter "Adapt-FS" (see top right), connection to Zone 0 by using an accordingly approved diaphragm seal upon request

# Case Configurations, Dimensional Data and Weights, Connecting Diagram

## Standard Case Field Housing

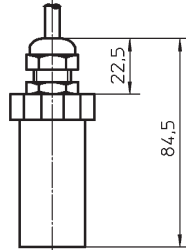
(no additional code letter)

Plug connector DIN EN 175301-803  
ventilation by plug screw fitting  
protection type IP 65



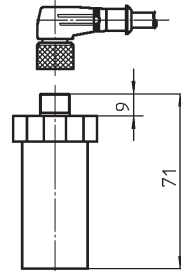
**Weight** for standard case:  
with temperature decoupler + approx. 0.050 kg

Cable connection  
ventilation by cable  
protection type IP 67



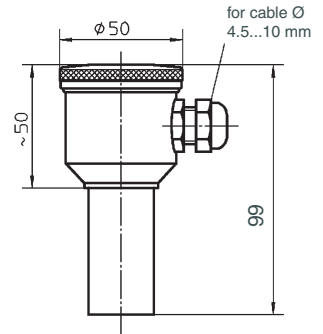
approx. 0.200 kg

Circular plug connector  
with screw plug,  
ventilation by cable  
protection type IP 65



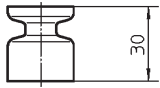
code letters **FG**

Screwed cable gland M 16x1.5  
ventilation by sinter filter, IP 65  
Option: ventilation by cable, IP 67



**Weight**  
for field housing: approx. 0.460 kg  
with temperature decoupler + approx. 0.050 kg

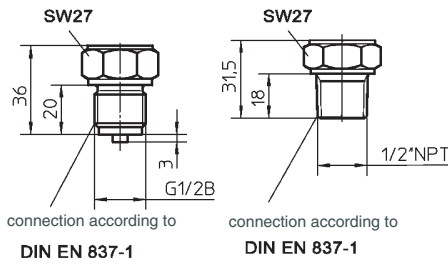
## Options



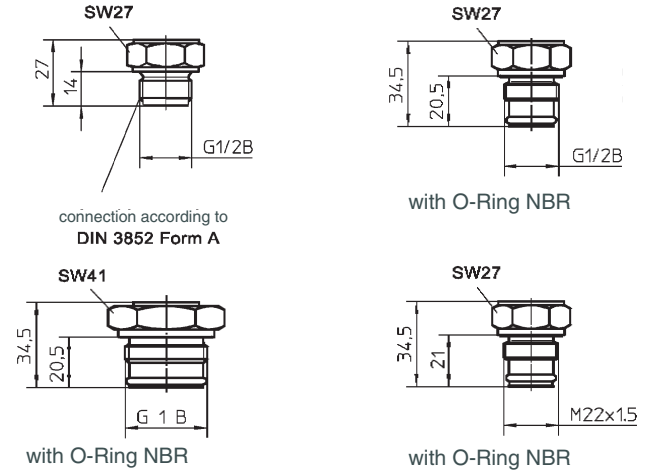
Temperature decoupler for process temperatures up to 140 °C

## Process Connections

### PTMEx



### PTMExFB



## Connecting Diagram

