

Capsule Gauge for Low Pressure

Crimped-on Ring Case Stainless Steel

KPChg 80
KPChgG 80

Standard Versions

Information on general and metrological features (load limits / temperature limitations) and standard pressure ranges / scale divisions can be found in model overview 6000.

Accuracy (EN 837-3)

Class 1.6

Case

with polished crimped-on ring, 1.4301 (304 stainless steel)

Case Protection Type (EN 60 529 / IEC 529)

IP 54

Case Ventilation

Model KPChgG Blow-out plug
Ventilation required for internal pressure compensation

Case Filling

for model KPChgG: Glycerine

Nominal Case Size

80 (mm) (3")

Wetted Parts

Type -1: Connection: brass
Diaphragm capsule: CuBe-alloy
O-ring sealing: NBR

Type -3: Connection: 1.4571 (316 stainless steel)
Diaphragm capsule: 1.4571 (316 stainless steel)
O-ring sealing: FPM

Case Configuration

Connection: screwed
Position of the connection: bottom connection,
optional: centre back connection (rm)
Mounting device: without, optional back flange for
surface mounting (Rh) / front flange
for panel mounting (Fr) or
u-clamp for panel mounting (BFR),
see page 2

Pressure Ranges (EN 837-3)

KPChg 80rm 0- 2.5 mbar to 0- 600 mbar
(0- 1.0 "WC to 0- 250 "WC)
KPChg 0- 25 mbar to 0- 600 mbar
(0- 10 "WC to 0- 250 "WC)
KPChgG 80, KPChgG 80-rm 0- 100 mbar to 0-600 mbar
(0- 40 "WC to 0-2 50 "WC)

Process Connection

G ½ B (½" BSP)

Window

KPChg Acrylic glass (punched for zero adjustment)
KPChgG Polycarbonate (punched for zero adjustment)

Movement

Brass / German silver for type -1
Stainless steel for type -3

Dial

Aluminium, black figures, white background



Pointer

Aluminium, black

Zero Adjustment

Frontsided

Ordering Information, Standard Pressure Ranges, Options

see pages 3 and 4

Special Versions and further Options among others

- Other process connections upon request
- Other pressure ranges and / or special scales, e.g. double scale mbar/kPa, coloured fields or areas, dial inscriptions, negative scale etc.
- Case parts 1.4404 (316 L stainless steel) upon request
- Increased case protection type, e.g. IP 65 upon request
- Wetted parts free of grease and oil for type -3 upon request
- Oxygen version for type -3 without case filling upon request
- Execution for higher medium temperatures upon request
- Position of the connection radial at 3 o'clock, 9 o'clock, 12 o'clock (others upon request) or position of connection other than vertical installation (90°) for types without case filling
- GOST-version for Russia, Ukraine, Kazakhstan

Accessory

see catalogue heading 11



Sales and Export South, West, North

ARMATURENBAU GmbH

Manometerstraße 5 • D-46487 Wesel - Ginderich
Tel.: +49 (0) 28 03 / 91 30-0 • Fax: +49 (0) 9 28 03 / 10 35
armaturenbau.com • mail@armaturenbau.com

Subsidiary Company, Sales and Export East

MANOTHERM Beierfeld GmbH

Am Gewerbepark 9 • D-08344 Grünhain-Beierfeld
Tel.: +49 (0) 37 74 / 58-0 • Fax: +49 (0) 37 74 / 58-545
manotherm.com • mail@manotherm.com

6203
09/12

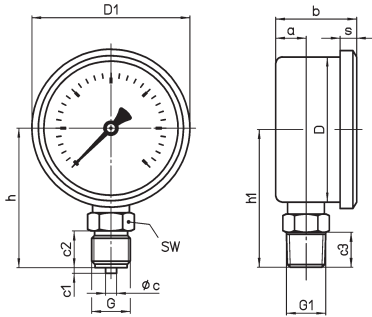
Case Configuration, Code Letters, Dimensional Data and Weights, Blow-out Device

Bottom connection

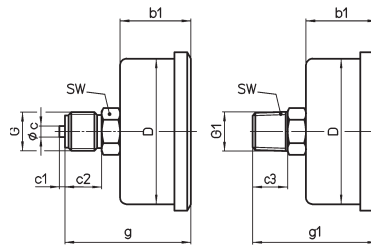
Centre back connection

no mounting device

(no additional code letter)

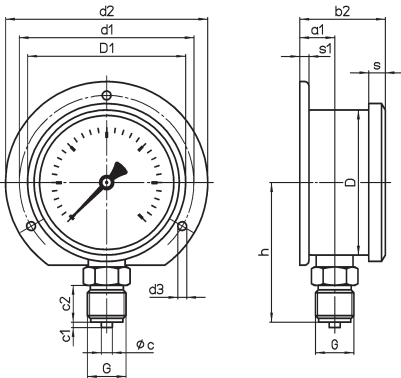


code letters: **rm**

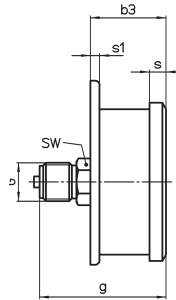


with back flange for surface mounting

code letters: **Rh**



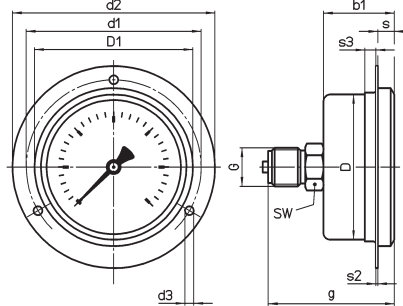
code letters: **rmRh**



(available upon request, but according to EN 837-3 not recommended)

with front flange for panel mounting

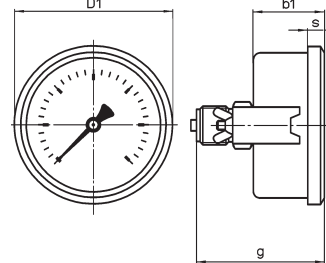
code letters: **rmFr**



recommended panel cut out
Ø 84 ± 0.5 mm (0.02")

with u-clamp for panel mounting

code letters: **rmBFr**



recommended panel cut out
Ø 81 ± 0.5 mm (0.02")

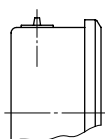
Dimensional data (mm/inches) and weights (kg/lb)

NCS	a	a1	b	b1	b2	b3	c	c1	c2	c3	D1	d1	d2	d3	g	g1	G	G1	h±1	h1±1	s	s1	s2	s3	SW	approx. weight ¹⁾	
																										KPChg	KPChgG
80 (3")	16 .63	20 .79	43 1.7	37 1.46	47 1.85	41 1.61	6 .24	3 .12	20 .79	19 .75	86 3.39	95 3.74	110 4.33	4.8 .19	67 2.63	66 2.6	G ½ B (½" BSP) M 20 x 1.5	½" NPT	76 2.99	75 2.95	9 .35	6 .24	1 .04	6 .24	22 .87	0.37 .82	0.50 1.10

¹⁾ Information for version without mounting device

Blow-out device

Model KPChgG
Blow-out plug 19



Ordering Information with Standard Pressure Ranges, Options

Basic Model:		Capsule Gauge for Low Pressure, Crimped-on Ring Case				KPChg
Case Filling:	without					without code letters
	glycerine					G
Nominal Case Size:	case-Ø 80 (mm) (3")				80	
Wetted Material:	copper alloy					-1
	stainless steel					-3
Case Configuration:	case / connection	screwed				without code letters
	position of the connection	bottom				without code letters
		centre back				rm
	mounting device	without				without code letters
		back flange for surface mounting				Rh
		front flange for panel mounting				Fr
	u-clamp for panel mounting				BFr	
Pressure Ranges:	mbar			inchWC		
	Vacuum	Compound Ranges	Pressure	Vacuum	Compound Ranges	Pressure
	-2.5 - 0 ¹⁾	-1 - 1.5 ¹⁾	0 - 2.5 ¹⁾	-1.0 - 0	-0.4 - 0.6	0 - 1.0
		-1.5 - 1 ¹⁾			-0.6 - 0.4	
	-4 - 0	-1.5 - 2.5	0 - 4	-1.6 - 0	-0.6 - 1.0	0 - 1.6
		-2.5 - 1.5			-1.0 - 0.6	
	-6 - 0	-2 - 4	0 - 6	-2.5 - 0	-1.0 - 1.5	0 - 2.5
		-4 - 2			-1.5 - 1.0	
	-10 - 0	-4 - 6	0 - 10	-4 - 0	-1.5 - 2.5	0 - 4
		-6 - 4			-2.5 - 1.5	
	-16 - 0	-6 - 10	0 - 16	-6 - 0	-2 - 4	0 - 6
		-10 - 6			-4 - 2	
	-25 - 0	-10 - 15	0 - 25	-10 - 0	-4 - 6	0 - 10
		-15 - 10			-6 - 4	
	-40 - 0	-15 - 25	0 - 40	-16 - 0	-6 - 10	0 - 16
		-25 - 15			-10 - 6	
	-60 - 0	-20 - 40	0 - 60	-25 - 0	-10 - 15	0 - 25
		-40 - 20			-15 - 10	
	-100 - 0	-40 - 60	0 - 100	-40 - 0	-15 - 25	0 - 40
		-60 - 40			-25 - 15	
-160 - 0	-60 - 100	0 - 160	-60 - 0	-20 - 40	0 - 60	
	-100 - 60			-40 - 20		
-250 - 0	-100 - 150	0 - 250	-100 - 0	-40 - 60	0 - 100	
	-150 - 100			-60 - 40		
-400 - 0	-150 - 250	0 - 400	-160 - 0	-60 - 100	0 - 160	
	-250 - 150			-100 - 60		
-600 - 0	-200 - 400	0 - 600	-250 - 0	-100 - 150	0 - 250	
	-400 - 200			-150 - 100		
Process Connection:	standard thread	G ½ B (½" BSP)				G ½ B
	options:	½" NPT				½" NPT
		M20x1.5				M 20 x 1.5
		G ¼ B (¼" BSP)				G ¼ B
		¼" NPT				¼" NPT
		M12x1.5				M 12 x 1.5
Options:	see page 4					
Example: KPChg 80-1, 0-60 mbar, G ½ B						

¹⁾ 180 angular degrees

Further Options regarding Ordering Information

Basic Model:	Capsule Gauge for Low Pressure, Crimped-on Ring Case	KPChg								
Model Code:		see page 3								
Options:	<p>red mark on the dial</p> <p>plastic clip red or green external at the crimped-on ring</p> <p>special adjustment</p> <p>blow-out plug 24 (reclosable)</p> <p>case ventilation no. 22 for outdoor installation</p> <p>case polished</p> <p>silicone-free version</p> <p>restrictor screw in orifice Ø 0.3 mm (0.01")</p> <p>pressure inlet port</p> <p>material: as process connection, brass or stainless steel</p> <p>overrange protection (üs) and / or low pressure protection (us)¹⁾</p> <p>for types -1 (copper alloy) 3-times üs or us²⁾</p> <table border="1" data-bbox="550 604 1187 667"> <tr> <td>10-times üs</td> <td>0 - 25 mbar and above</td> </tr> <tr> <td>10-times us</td> <td>-100 - 0 mbar and above</td> </tr> </table> <p>combination 10-times üs and 10-times us only for gauge-vacuum-ranges for spans 100 mbar (40 "WC) and above</p> <p>for types -3 (stainless steel) 3-times üs or us²⁾</p> <table border="1" data-bbox="550 840 1187 902"> <tr> <td>10-times üs</td> <td>0 - 25 mbar and above</td> </tr> <tr> <td>10-times us</td> <td>-100 - 0 mbar and above</td> </tr> </table> <p>combination 10-times üs and 3-times us only for gauge-vacuum-ranges for spans 40 mbar (16 "WC) and above</p> <p>measuring point marking with stainless steel-plate 12 mm x 55 mm (0.47" x 2.17"), wire mounting or sticker on the case coverage</p>	10-times üs	0 - 25 mbar and above	10-times us	-100 - 0 mbar and above	10-times üs	0 - 25 mbar and above	10-times us	-100 - 0 mbar and above	<p>(order at the moment still as cleartext)</p>
10-times üs	0 - 25 mbar and above									
10-times us	-100 - 0 mbar and above									
10-times üs	0 - 25 mbar and above									
10-times us	-100 - 0 mbar and above									

Special Versions: Please describe your requirements clearly