

# Combi Gauges for Rail Cars

With two Measuring Units

Model **DRChg 125-1Fz**

## Application

Pressure gauges model **DRChg 125-1 Fz rmBFR**, are used for the measurement of two different pressures and are applied in rail cars, especially for pneumatic brake systems. The instruments are provided with u-clamps for panel mounting and they combine direct and indirect lighting.

## Construction

The pressure gauges are provided with two independently working bourdon tube measuring systems. Each system has a separate pressure connection. A movement with separate pointer shafts transfers the pressure caused motion of the bourdon tubes onto the particular pointer.

## Standard Version

### Accuracy

Class 1.0 separate for each measuring system

### Position of Installation

90°

### Case

1.4301 (304 stainless steel)  
with crimped-on ring, aluminium, black anodised

### Case Protection Type (EN 60529 / IEC 529)

IP 54 in front of the panel

### Blow-out Device

Blow-out plug in the back of the case

### Lighting

Directly 2 x BA9s 24 V / 2 W and  
indirectly by lighting apertures in the case

### Nominal Case Size

125 (mm) (5")

### Wetted Parts

Connections: brass  
Bourdon tubes: bronze, soft soldered, c-form

### Case Configuration

Position of the connections: center back connection,  
parallel one above the other (rm)  
Mounting device: u-clamp for panel mounting (BFR)

### Pressure Ranges

0-10 bar

### Process Connection

2x M 16 x 1.5 including chuck cone for cutting ring  
L 10 according to DIN EN ISO 8434-1

Including restrictor screw in each pressure inlet port,  
orifice-Ø 0.8 mm (0.03").  
Each process connection is marked with a coloured spot, matching  
the colour of the pointer.

### Window

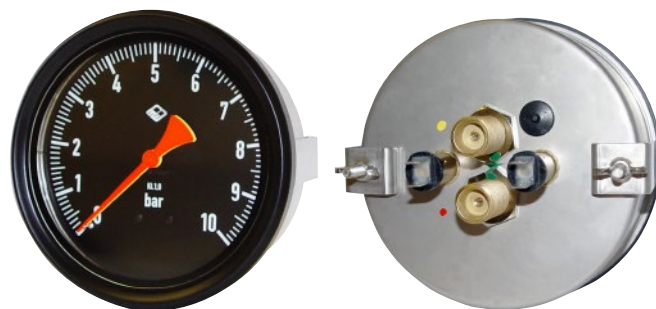
Reflex-reduced laminated safety glass

### Movement

Brass / German Silver

### Dial

Aluminium black, white scale, with zero stop (stop pin)



### Pointer

2x aluminium, 1 pointer red (RAL 3026), 1 pointer yellow (RAL 1016)

### Safety Category according to EN 837-1

S1 pressure gauges with blow-out device

## Options and others

- Instruments without combination of lighting, meaning either direct or indirect lighting
- Other pressure ranges, e.g. 0 – 16 bar
- Other than 90° installation
- Process connection with cutting ring and union nut
- Other process connections upon request
- Restrictor screw brass, orifice-Ø 1.0 mm (0.04"), in the inlet port
- Other colours for pointer, e.g. white (RAL 9010)
- Dial inscription (ZA) according to your demand, in terms of colour matching the pointer
- Coloured marks matching the pointers
- BA9s LED 24-32 V , 48-75 V, 110-150 V
- Other case configuration, lower back connection (r)

## Ordering Information:

Model: **DRChg 125-1 Fz rmBFR**  
Pressure range: **0-10 bar**  
Process connection: **L 10**  
Colour of pointer: front pointer: **red or yellow**  
rear pointer: **red or yellow**  
Specifics: e.g. dial inscriptions (**ZA**),  
other position of installation etc.  
(see above)

### Example:

- DRChg 125-1 Fz rmBFR, 0-10 bar, L 10, front pointer red,  
rear pointer yellow



Sales and Export South, West, North

**ARMATURENBau GmbH**  
Manometerstraße 5 • D-46487 Wesel - Ginderich  
Tel.: +49 (0) 28 03/ 91 30-0 • Fax: +49 (0) 28 03/ 10 35  
armaturenba.com • mail@armaturenba.com



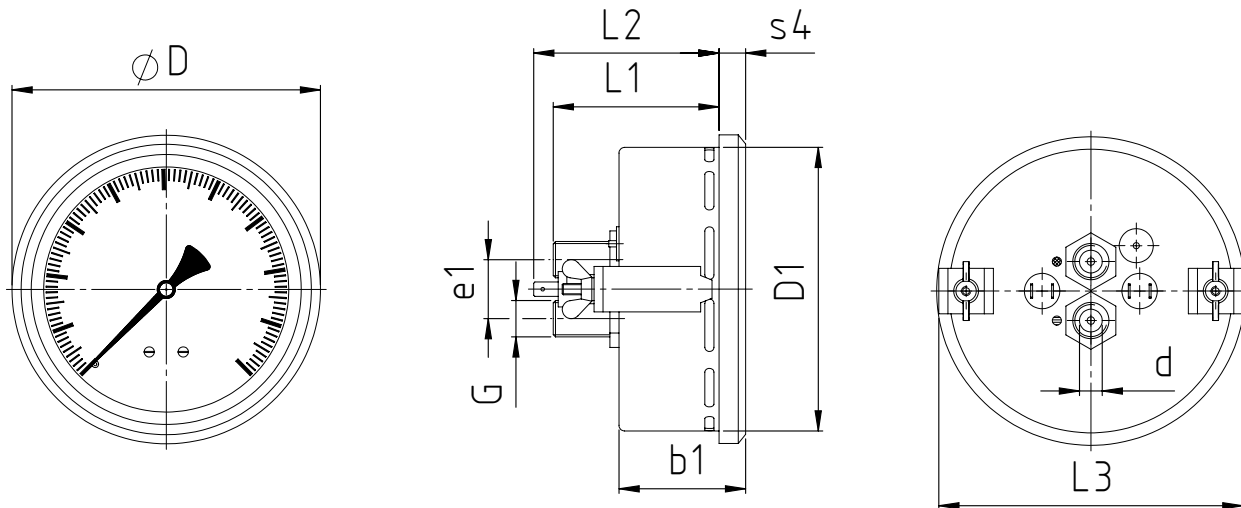
Subsidiary Company, Sales and Export East

**MANOTHERMBeierfeld GmbH 5901.1**  
Am Gewerbepark 9 • D-08344 Grünhain-Beierfeld  
Tel.: +49 (0) 37 74/ 58-0 • Fax: +49 (0) 37 74/ 58-545  
manotherm.com • mail@manotherm.com

07/12

# Case Configurations, Dimensional Data and Weights

DRChg 125-1 Fz rmBFr



**Dimensional data (mm/ inches) and weights (kg/ lb)**

NCS	b1	D	D1	Process connections DIN EN ISO 8434-1		e1	L1	L2	L3	s4	recommended panel cut out Ø	Weight (approx.)
				d <sup>B11 1)</sup>	G							
125	56	136	125	L10		26	74	83	134	11	128 ± 1	0.93
5"	2.2	5.35	4.92	.39	M 16 x 1.5	1.02	2.91	3.27	5.28	.43	5.04 ± .04	2.05

<sup>1)</sup>Tolerance class according to ISO 286-2

Technical changes, replacement of materials and errors excepted.