

# Combi Gauges for Rail Cars

With one Measuring Unit

Model **RChg 125-1Fz**

## Application

Pressure gauges model **RChg 125-1 Fz rBFr**, are applied for rail cars, especially for pneumatic brake systems. The instruments are provided with u-clamps for panel mounting and as combi gauge are equipped with direct and indirect lighting.

## Standard Version

### Accuracy

Class 1.0

### Position of Installation

90°

### Case

1.4301 (304 stainless steel)  
with crimped-on ring, aluminium, black anodised

### Case Protection Type (EN 60529 / IEC 529)

IP 54 in front of the panel

### Blow-out Device

Blow-out plug in the back of the case

### Lighting

Directly 2 x BA9s 24 V / 2 W and  
indirectly by lighting apertures in the case

### Nominal Case Size

125 (mm) (5")

### Wetted Parts

Connection: brass  
Bourdon tube: bronze, soft soldered, c-form

### Case Configuration

Position of the connection: lower back connection (r)  
Mounting device: u-clamp for panel mounting (BFr)

### Pressure Ranges

0-6, 0-10 and 0-12 bar

### Process Connection

M 16 x 1.5 with chuck cone for cutting ring  
L 10 according to DIN EN ISO 8434-1

Including restrictor screw in the pressure inlet port,  
orifice-Ø 0.8 mm (0.03")

### Window

Reflex-reduced laminated safety glass

### Movement

Brass / German silver

### Dial

Aluminium black, white scale, with zero stop (stop pin)

### Pointer

Aluminium, colour yellow (RAL 1016)

### Safety Category according to EN 837-1

S1 pressure gauges with blow-out device



## Options and others

- Instruments without combination of lighting, meaning either direct or indirect lighting
- Other pressure ranges, e.g. 0 – 16 bar
- Other than 90° installation
- Process connection with cutting ring and union nut
- Other process connections upon request
- Restrictor screw brass, orifice-Ø 1.0 mm (0.04"), in the inlet port
- Selectable colours for pointer, e.g. red (RAL 3026) or white (RAL 9010)
- Dial inscription (ZA) according to your demand, in terms of colour matching the pointer
- Coloured marks matching the pointer
- BA9s LED light 24-32 V, 48-75 V, 110-150 V

## Ordering Information:

Model: **RChg 125-1 Fz rBFr**

Pressure range: **0-6 bar, 0-10 bar, 0-12 bar**

Process connection: **L 10**

Specifics: e.g. dial inscriptions (**ZA**),  
other position of installation etc.  
(see above)

### Example:

- RChg 125-1 Fz rBFr, 0-12 bar, L 10  
ZA: "brake cylinder" white



Sales and Export South, West, North  
**ARMATURENBAU GmbH**  
Manometerstraße 5 • D-46487 Wesel - Ginderich  
Tel.: +49 (0) 28 03/91 30-0 • Fax: +49 (0) 28 03/10 35  
armaturenbau.com • mail@armaturenbau.com

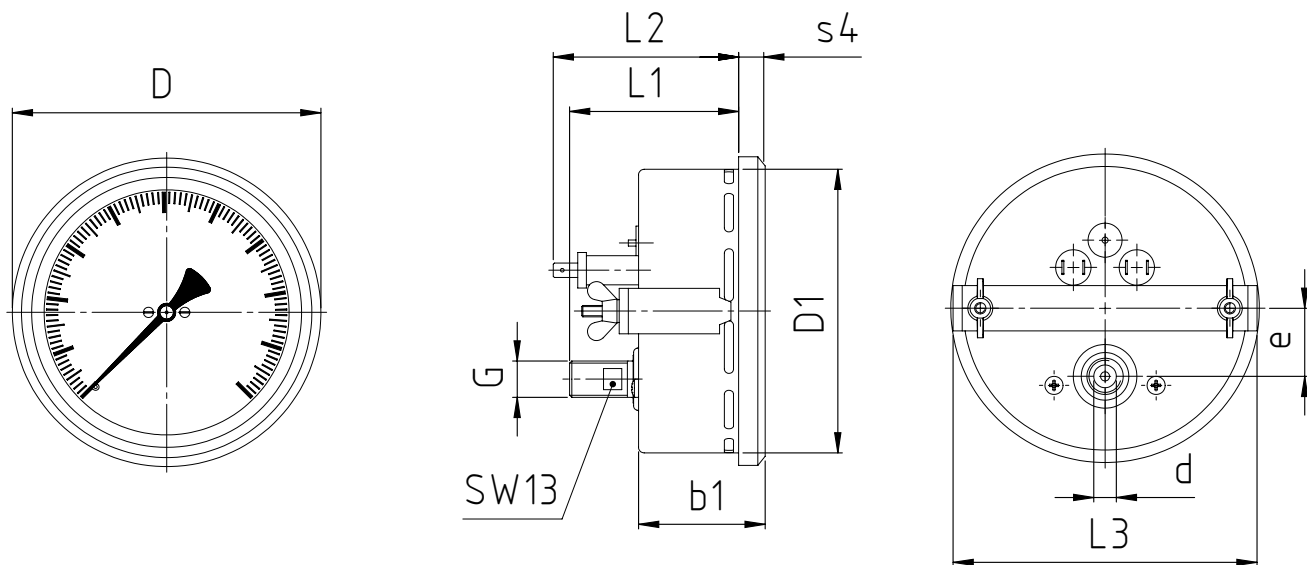


Subsidiary Company, Sales and Export East  
**MANOTHERMBeierfeld GmbH 1901.1**  
Am Gewerbepark 9 • D-08344 Grünhain-Beierfeld  
Tel.: +49 (0) 37 74/58-0 • Fax: +49 (0) 37 74/58-545  
manotherm.com • mail@manotherm.com

07/12

# Case Configurations, Dimensional Data and Weights

RChg 125-1 Fz rBFr



**Dimensional data (mm/ inches) and weights (kg/ lb)**

NCS	b1	D	D1	e	Process connection DIN EN ISO 8434-1		L1	L2	L3	s4	SW	recommended panel cut out Ø	Weight (approx.)
					d <sup>B11 1)</sup>	G							
125	56	136	125	30	L10		74	82	134	11	13	128 ± 1	0.68
5"	2.2	5.35	4.92	1.18	.39	M 16 x 1.5	2.91	3.23	5.24	.43	.51	5.04 ± 0.04	1.50

<sup>1)</sup>Tolerance class according to ISO 286-2

Technical changes, replacement of materials and errors excepted.