

Bourdon Tube Pressure Gauges

Bayonet Ring Case Stainless Steel,
Safety Category S3 according to EN-837-1



RSCh 63
RSChG 63

Standard Versions

Information on general and metrological features (load limits / temperature limitations) and standard pressure ranges / scale divisions can be found in model overview 1000.

Accuracy (EN 837-1)

Class 1.6

Class 2.5 for pressure ranges 0-600 and 0-1,000 bar
(0-10,000 and 0-15,000 psi)

Case

Bayonet ring, 1.4301 (304 stainless steel)

Gehäuse-Schutzart (EN 60 529 / IEC 529)

IP 54,

IP 65 for model RSChG

Blow-out Device

Blow-out back; should the bourdon tube rupture, the entire case back separates, allowing full relief.

Case Ventilation

Model RSChG, without ventilation, but with internal pressure compensation by pressure equalizing membrane.

Gehäusefüllung

for model RSChG: glycerine

Nominal Case Size

63 (mm) (2½")

Wetted Parts

Type -3: Connection: 1.4571 (316 stainless steel)

Bourdon tube: 1.4571 (316 stainless steel),
argon arc welding,
≤ 60 bar (800 psi) c-form,
≥ 100 bar (1,500 psi) helical

Type -1: Connection: brass

Bourdon tube: bronze,
≤ 40 bar (600 psi) soft-soldered, c-form,
≥ 60 bar (800 psi) silver brazed, helical

Case Configuration

Connection: screwed

Position of the connection: bottom connection,
Model RSCh 63-3 and 63-6,
optional lower back connection (r)

Mounting device: without, optional back flange for
surface mounting (Rh) / front flange
for panel mounting (Fr), see page 2

Pressure Ranges (EN 837-1)

0-0.6 bar (0-10 psi) to 0-1,000 bar (0-15,000 psi) for type -3

0-0.6 bar (0-10 psi) to 0- 600 bar (0-10,000 psi) for type -1

Process Connection

G ¼ B (¼" BSP)

Window

Laminated safety glass

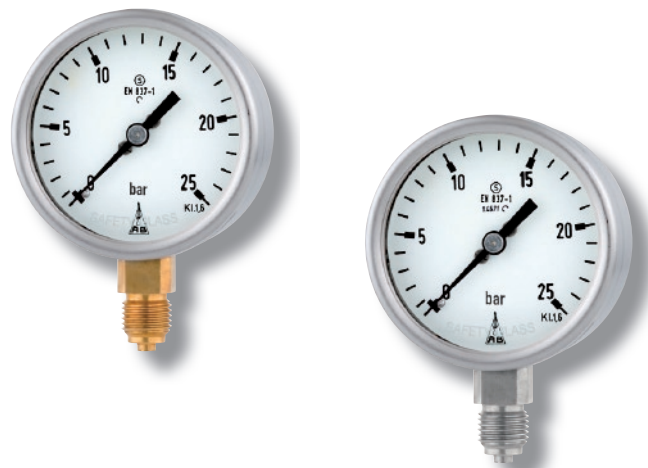
Movement

Stainless steel for type -3

Brass/German silver for type -1

Dial

Aluminum, black figures, white background



Pointer

Aluminum, black

Safety Category according to EN 837-1

S3, safety pressure gauge with break-proof solid front,
proved: pressure ranges up to 1,000 bar (15,000 psi) (type -3),
up to 600 bar (10,000 psi) (type -1),
bottom connection: RSCh and RSChG
lower back connection: RSCh 63-3
marking , see also sectional drawing overleaf.

Ordering Information, Standard Pressure Ranges, Options:

see pages 3 and 4

Special Versions and further options among others

- Special process connections, e. g. VCR-F, VCR-M, VCR-M short (see technical information sheet T01-000-016), others upon request
- Other pressure ranges and / or special scales, e.g. double scale bar/psi, coloured fields or areas, dial inscriptions, negative scale etc.
- Version as refrigeration gauge with temperature scale
- Case parts 1.4404 (316 L stainless steel)
- Increased case protection type, e. g. IP 65 without case filling, upon request
- Other case fillings upon request
- Model RSChG for ambient temperatures down to -40 °C (-40 °F) upon request. Our recommendation for ambient temperatures below -20 °C (-4 °F); models RChG resp. RChG
- Position of connection radial at 3 o'clock, 9 o'clock or 12 o'clock (others upon request) or other than vertical installation (90°)
- GOST-version for Russia, Ukraine, Kazakhstan
- Sour gas-resistant version according to NACE

Accessory:

Chemical seals: see catalogue-heading 7

Electrical: limit switch contact assembly DS 1619.1 and catalogue-heading 9.1

Other accessory: see catalogue-heading 11



Sales and Export South, West, North

ARMATURENBAU GmbH

Manometerstraße 5 • D-46487 Wesel - Ginderich
Tel.: +49 (0)28 03 / 91 30-0 • Fax: +49 (0)28 03 / 10 35
armaturenbau.com • mail@armaturenbau.com

Subsidiary Company, Sales and Export East

MANOTHERM Beierfeld GmbH

Am Gewerbepark 9 • D-08344 Grünhain-Beierfeld
Tel.: +49 (0)37 74 / 58-0 • Fax: +49 (0)37 74 / 58-545
manotherm.com • mail@manotherm.com

1610

11/09

Case Configurations, Code Letters, Dimensional Data and Weights, Blow-out Device

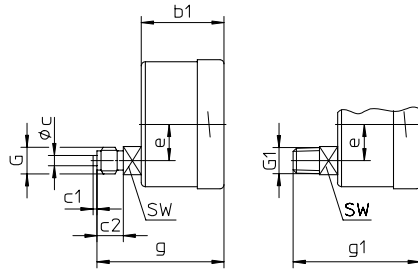
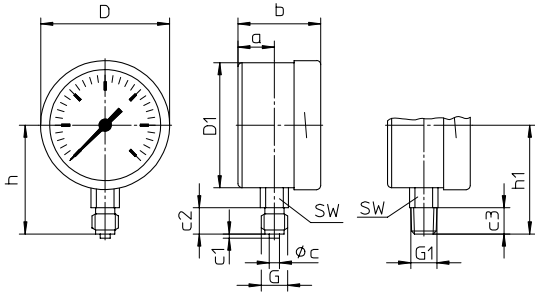
Bottom connection

Lower back connection (only -3 and -6)

No mounting device

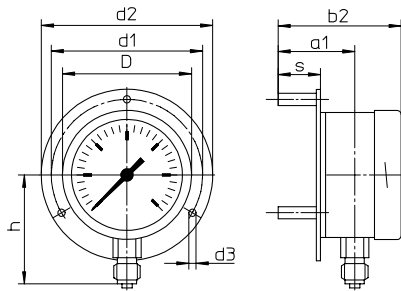
(no additional code letter)

code letter: r



Back flange for surface mounting

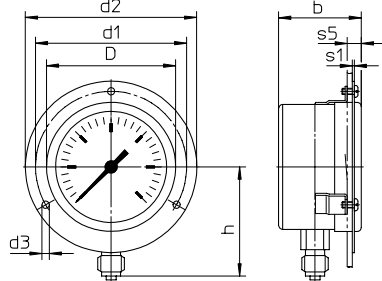
code letters: Rh



Version Rh including 3 separate mounting spacers.

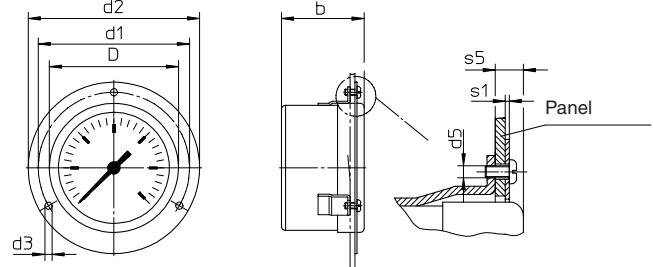
Front flange for panel mounting

code letters: Fr



(available upon request, but according to EN 837-1 not recommended)

code letters: rFr



recommended panel cut out for $\varnothing 67 \pm 0.5 (0.02")$

Dimensional data (mm / inches) and weights (kg / lb)

NCS	a	a1	b	b1	b2	c	c1	c2	c3	D	D1	d1	d2	d3	d5	e	G	G1	g	g1	h ^{±1}	h1 ^{±1}
63 2 1/2"	18 .71	38 1.5	41 1.61	41 1.61	61 2.4	5 .2	2 .08	13 .51	13 .51	64 2.52	62 2.44	75 .95	85 3.35	3.6 .14	M3	18 .71	G 1/4 B 1/4" BSP M 12x1.5	1/4" NPT	63 2.48	63 2.48	54 2.13	54 2.13

s	s1	s5	SW	approx. weight ¹⁾	
				RSCh	RSChG
21 .83	1 .04	7 .28	14 .55	0.18 .39	0.25 .55

¹⁾ Information for version without mounting device

Schematic drawing

